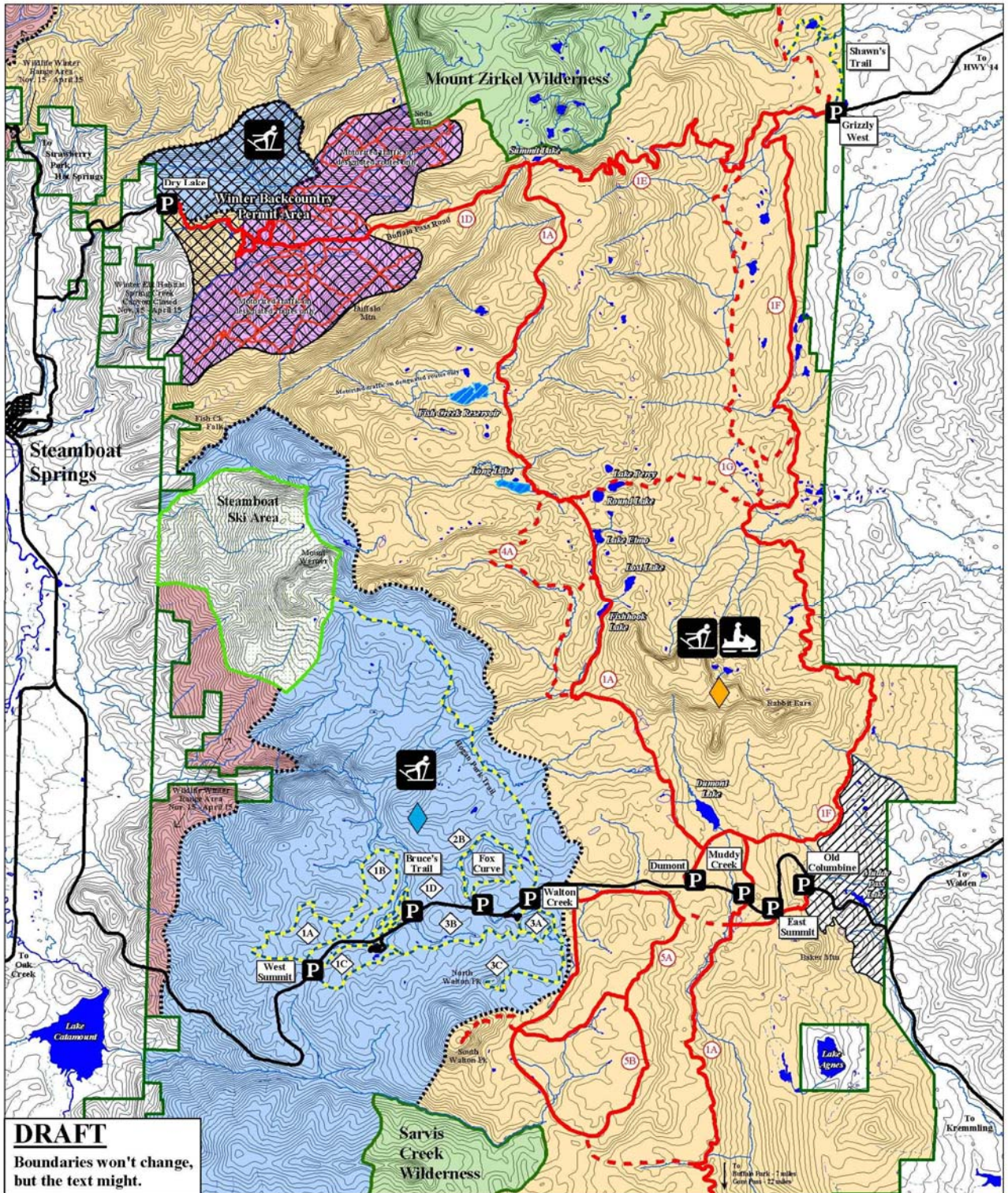


# Rabbit Ears Pass / Buffalo Pass Winter Recreation Area



**DRAFT**  
 Boundaries won't change,  
 but the text might.

<ul style="list-style-type: none"> <li> Groomed Snowmobile Route Marked with </li> <li> Ungroomed Snowmobile Route Marked with </li> <li> Ski Routes Marked with </li> <li> Backcountry Permit Area Designated Routes</li> <li> Forest Boundary</li> </ul>	<ul style="list-style-type: none"> <li> Lynx / Wildlife Corridor Voluntary Restrictions on All Winter Use</li> <li> Winter Backcountry Permit Area, Permit Required For All Use</li> <li> Closed to Motorized Use, Non- Motorized Use Not Advised</li> <li> Municipal Water Supply PLEASE Stay Off Lakes And Reservoirs</li> </ul>	<ul style="list-style-type: none"> <li> Non-Motorized Area Motorized Use Prohibited</li> <li> Motorized / Mixed Use Area</li> <li> Mixed Use and Commercial Use Area</li> <li> Wilderness Area Motorized Use Prohibited</li> <li> Parking</li> </ul>	<div style="text-align: center;">                 100 10 30 000         </div> <div style="text-align: center;"> </div>
--	--	--	---

50 ft contours 0 3 6 Miles

This map provides general information of the area, it is not meant for navigation. More detailed maps are available at the US Forest Service office in Steamboat.